

Institute of Electrical and Electronics Engineers

University of Michigan - Dearborn



About IEEE

- World's largest technical professional society
- More than 377,000 members
- Members in more than 150 countries
- 60,000+ student members
- 1,450+ student branches worldwide
- Founded in 1884
- Members Include: Alexander Graham Bell and Thomas Edison
- 300+ Major Conferences Every year
- Has 900 active standards with 700 under development
- 42 Sub societies in areas of interest

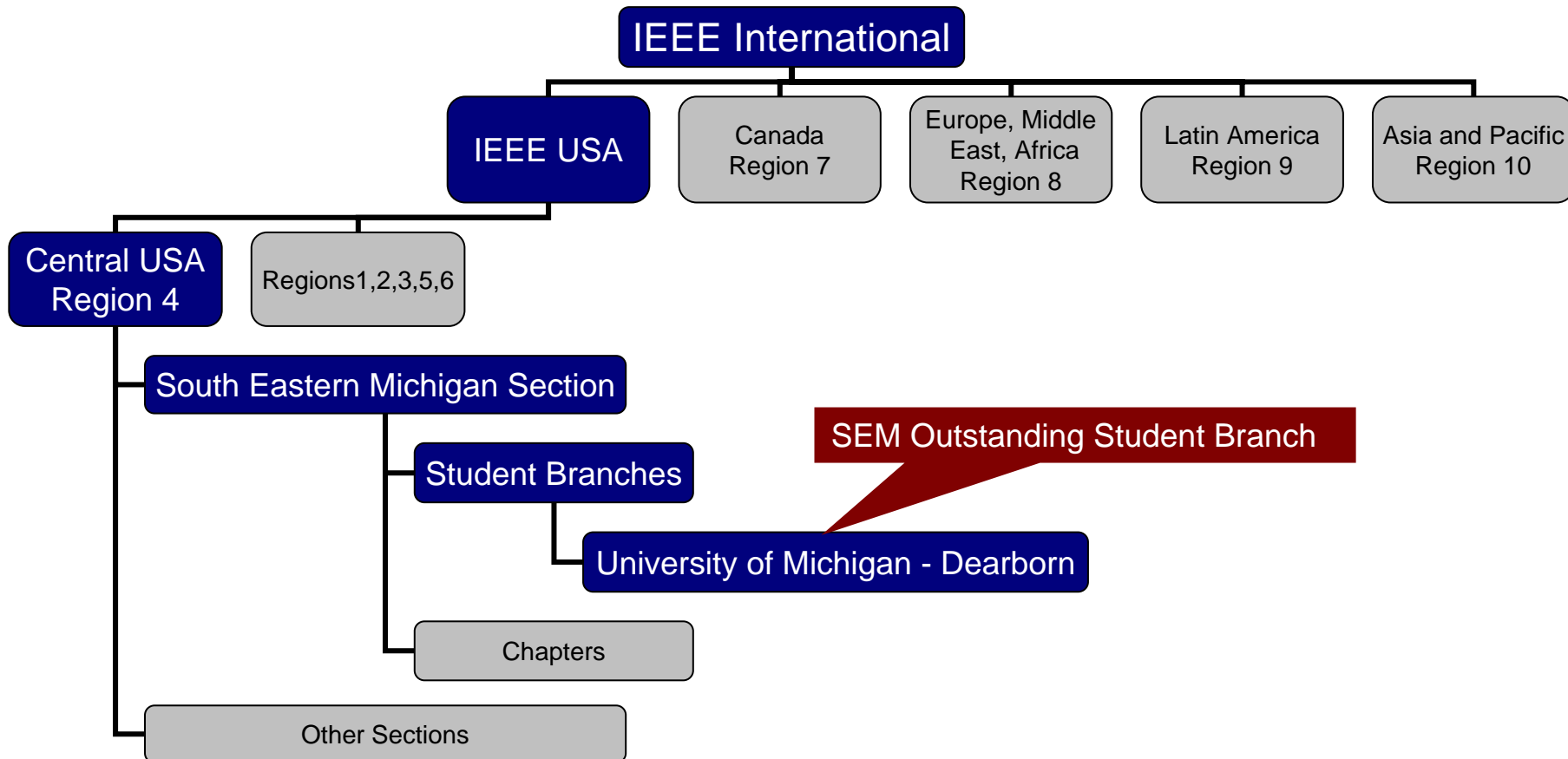


Grades of IEEE Membership

- Student
- Associate – 2 year degree in technical areas
- Member
 - BSE
 - BSE + 3 years work experience
 - BSE + 6 years work experience
- Senior member – professional practice 10+ years – Significant performance 5+ years
- Fellow – By invitation only – Outstanding contributions to Engineering
- Honorary – Outstanding contributions but not members of IEEE
- Life member – age 65+ years and age + membership years greater than 100



IEEE Structure





Why Join?

- Enhances Resume
- Allows networking with people from the same profession.
- Builds leadership skills
- Builds confidence
- Publications give up-to-date information of the new technology.
- Excellent research resources for students, companies, and researchers.
- Has many student competitions, research grants, and awards.
- Scholarships
- Sub-society memberships in the areas of your interest.
- Technical and professional experience.
- Other membership benefits and discounts.
- Get help on homework from other students at your Chapter.



After the Break



Penny Wars

- Penny collection jars in the ECE office
- Drop as many pennies as you like in the jars for the profs you like
- Drop nickels, dimes, quarters, and bills in the jars of the profs you DON'T like
- Final calculation:
Total Winnings =(Money in Pennies)-(Money in other forms)
- The Prof with the most winnings wins the Best ECE Prof award for the year

The University of Michigan - Dearborn

Institute of Electrical & Electronics Engineers



IEEE

How to Join

- Students can only Join Online
<http://www.ieee.org/join>
- To join on Campus
E-mail the IEEE student Branch at
ieee@engin.umd.umich.edu

The University of Michigan - Dearborn

Institute of Electrical & Electronics Engineers



IEEE

To get info about IEEE

Website

<http://www.ieee.org>

<http://www.ieee.org/students>

E-mail

Member services: membership@ieee.org

Student services: student.services@ieee.org

445 Hoes Lane

P.O. Box 1331

Piscataway, NJ 08855

The University of Michigan - Dearborn

Institute of Electrical & Electronics Engineers



IEEE

Info about the Student Branch

E-mail

ieee@engin.umd.umich.edu

Website

<http://www.engin.umd.umich.edu/~ieee>

Engineering Complex - Room 1297
The University of Michigan-Dearborn
4901 Evergreen Road
Dearborn, MI 48128