

Main Graphical User Interface

Key Technology

We are among the first in coining the terminology of “non-isolated outlier clusters,” which are a special type of outlier clusters that are connected to main surfaces and frequently appear in real-world laser scanning on metallic surfaces without special coating. In addition, we are the first research group who proposed an effective solution to remove this type of outlier clusters by using local spectral property and other techniques.

Supported File Formats

- Input File: asc, fls, vtx, xyz, scn, pcn
- Output File: asc, vtx, xyz, scn



UM GeoModifier

About Software

UM GeoModifier is a software tool that can be used to process any kind of point cloud data generated from LIDARs, laser scanners, optical scanners, or other related sensors.

Features of GeoModifier

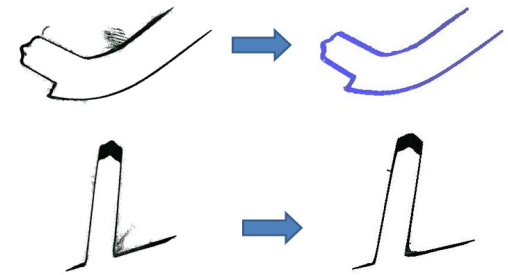
- Cleaning short-range noise
- Cleaning long-range outliers
- Cleaning non-isolated outlier clusters
- Points to mesh
- Simplification of data

Price of GeoModifier

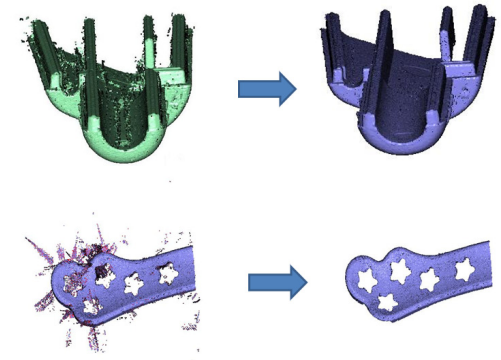
- \$500 for one license with regular tech support
- \$1,000 for one license with extensive tech support

MICHIGAN VIRTUAL ENGINEERING LAB

4901 Evergreen Rd, Rm 221 CIS,
 Dearborn, MI 48128
 Web: <http://www-personal.engin.umd.umich.edu/~shen/>



Results



MICHIGAN VIRTUAL ENGINEERING LAB

Contact: Prof. Jie Shen, FASME,
 FIET, EIC of IJMS
 Email: shen@umich.edu
 Tel: 313-717-1501